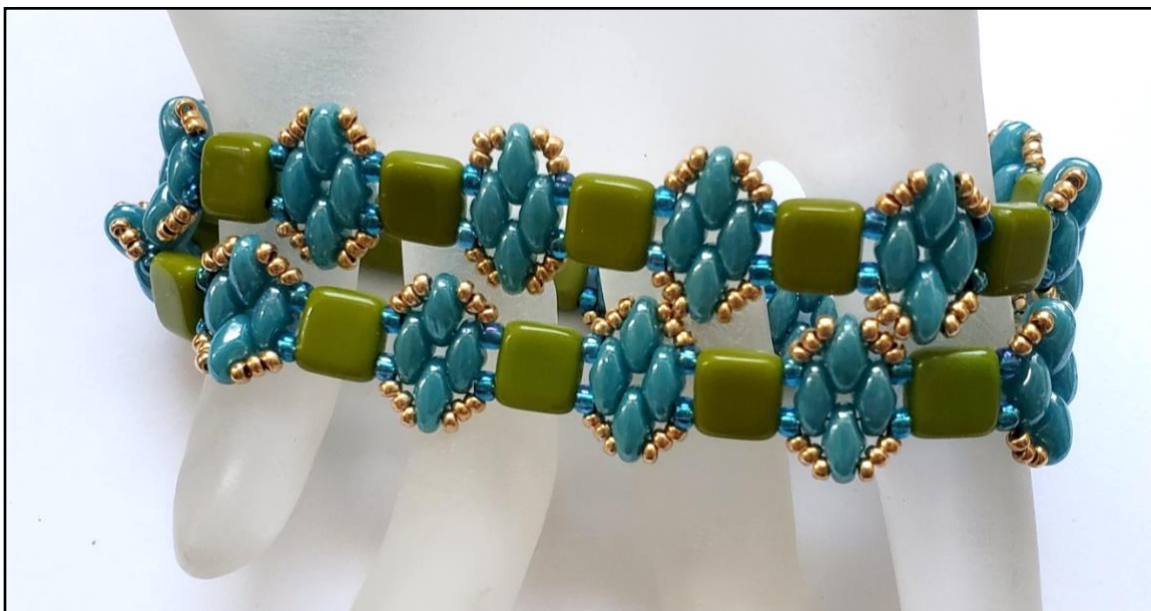




TILE WRAPS BRACELET

by Leslie A Pope

www.twistedsistahbeads.com



Two needles, two-holed beads, two wraps ... too much fun!

Skill level: Beginner and up

Techniques to know: Stitching with 2-hole beads, opening/closing jump rings

MATERIALS

1.5 grams size 15° seed beads

1.5 grams size 11° seed beads

20-25 Tile beads (2-hole, 6mm)

10 grams SuperDuos

2 size 4mm soldered jump rings

2 size 5mm jump rings

Clasp of choice

6lb. Fireline™

2 Size 11 beading needles

Scissors or Thread Zapper

Pliers to work jump rings

TIPS:

- Check to make sure all holes of any multiple hole beads are open before stitching.
- When sewing back through beads, be careful not to skip over any beads.
- A Tile/SuperDuo section measures approximately ½". Finished beadwork should be one-inch shorter than your wrist measurement doubled.

Please respect my designs by not reselling or altering the pattern in any way. Do not replace or modify text, images, names, logos, or URLs. Feel free to recreate this design for personal use or limited sales but not for mass production. Permission to teach this pattern is exclusive to the designer and customers of the BeadSmith.

FIGURE 1

Step 1. Thread a needle on each end of 2 yards of Fireline. String one Tile and three 11°. Sew through the second hole of the Tile and center the beads on the thread.

FIGURE 2

Step 2 (black thread). On one needle, string one 11°, three SuperDuos, one 11° and one Tile for the desired length. **NOTE:** I repeated Step 2 twenty-one times (22 Tiles) for a bracelet to fit my 6.5" wrist.

Step 3 (red thread). With second needle, string one 11° and sew through the open hole of the SuperDuo. String one SuperDuo and sew through the next Super Duo. String one 11° and sew through the next Tile.

Step 4. Repeat Step 3 to the end of the beadwork, exiting the end Tile. **NOTE:** Beadwork should still be centered on the thread.

FIGURE 3

Step 5 (black thread). On one needle, string three 11°s and sew through the second hole of the end tile and the following 11°.

Step 6 (red thread). With second needle, sew through two of the three 11°s added in Step 5. String two 15°s, one 11° and a soldered jump ring. Sew back through the 11°. String two 15°s and sew back through the 11° the thread was exiting. Repeat thread path once more (not shown in the illustration). Sew through the third 11° added Step 5. Continue through the end Tile and the 11°.

FIGURE 4

Step 7 (black thread). On one needle, string three 15°s and sew through the open hole of the SuperDuo. String three 15°s and sew through the next 11°, Tile and 11°.

Step 8. Repeat Step 7 for the length of the bracelet. Exit the second 11° over the end Tile.

Step 9. String two 15°s, one 11° and a soldered jump ring. Sew back through the 11°. String two 15°s and sew through the 11° the thread was exiting. Repeat thread path once more (not shown in the illustration). Exit the third 11° over the end Tile.

Step 10 (red thread). With second thread, Repeat Steps 7 and 8 for the length of the bracelet.

Step 11. Secure both threads within the beadwork and trim the excess.

Step 12. Attach a jump ring and half of the clasp to a soldered ring using pliers. Repeat with the second half of the clasp.

You have completed your Tile Wraps Bracelet. Enjoy!



Leslie Pope, or you may know her better as “Twisted Sistah Beads”, has a passion for beads that she loves to share with others. As Twisted Sistah, Leslie has exhibited and taught bead weaving classes up and down the East Coast. Leslie’s beaded creations have been featured in various beading magazines and books. You can also find her kits and tutorials at twistedstahbeads.com and in the BeadSmith.com online library of patterns. Leslie is currently the Senior Designer at the BeadSmith, a global wholesaler of beads and jewelry-making supplies. As part of her job and as a member of the BeadSmith Inspiration Squad, she gets to design with all the newest beads so she can inspire beaders everywhere.

Please respect my designs by not reselling or altering the pattern in any way. Do not replace or modify text, images, names, logos, or URLs. Feel free to recreate this design for personal use or limited sales but not for mass production. Permission to teach this pattern is exclusive to the designer and customers of the BeadSmith.

ALTERNATIVE BRACELET OPTION

To make an adjustable bracelet, use a partially-finished bracelet end finding. Just complete a bracelet that is at least six Tiles long (**NOTE:** The beadwork needs to span from wrist bone to wrist bone). Attach the partially-finished bracelet end to each soldered jump ring.

Have fun adding beaded dangles or charms to the other loops of the bracelet ending.



TILE WRAPS BRACELET ILLUSTRATIONS BY LESLIE A POPE

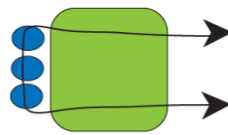


FIGURE 1

The following illustrations are abbreviated for clarity.

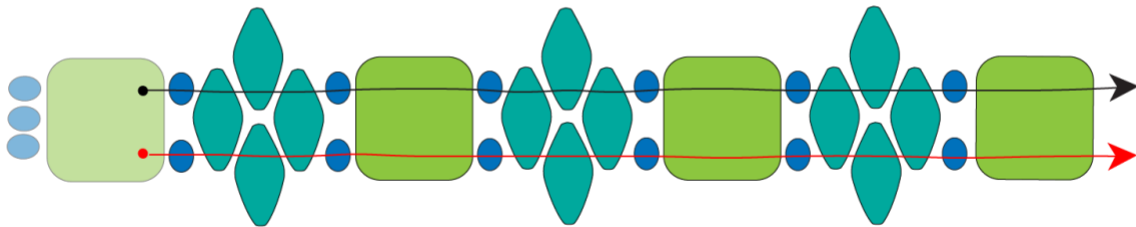


FIGURE 2

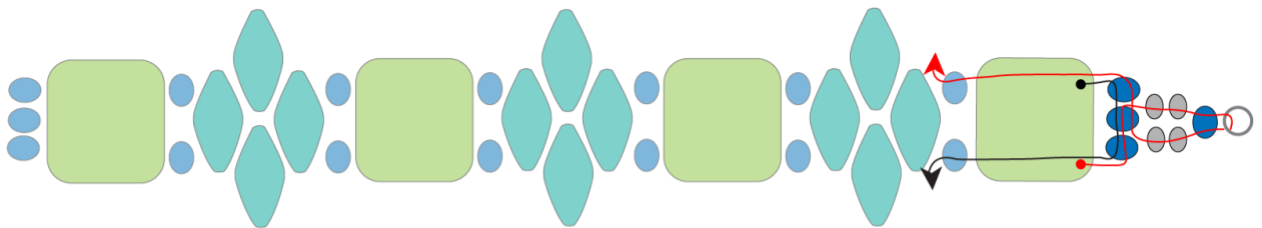


FIGURE 3

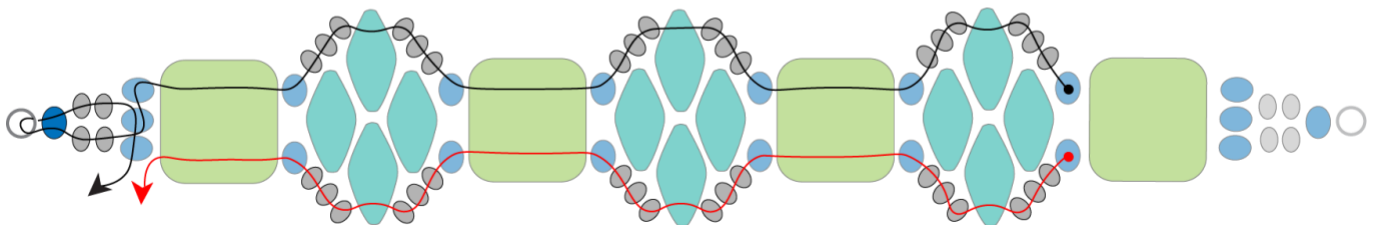


FIGURE 4

Please respect my designs by not reselling or altering the pattern in any way. Do not replace or modify text, images, names, logos, or URLs. Feel free to recreate this design for personal use or limited sales but not for mass production. Permission to teach this pattern is exclusive to the designer and customers of the BeadSmith.